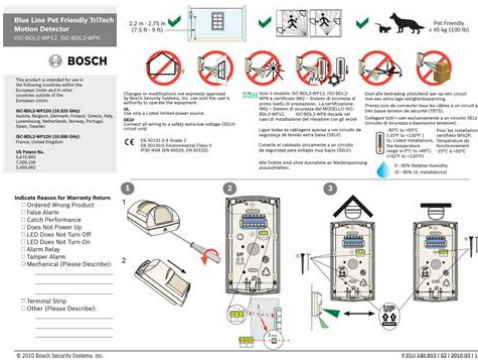


bosch motion sensor manual



File Name: bosch motion sensor manual.pdf

Size: 4013 KB

Type: PDF, ePub, eBook

Category: Book

Uploaded: 4 May 2019, 21:44 PM

Rating: 4.6/5 from 650 votes.

Status: AVAILABLE

Last checked: 3 Minutes ago!

In order to read or download bosch motion sensor manual ebook, you need to create a FREE account.

[**Download Now!**](#)

eBook includes PDF, ePub and Kindle version

[Register a free 1 month Trial Account.](#)

[Download as many books as you like \(Personal use\)](#)

[Cancel the membership at any time if not satisfied.](#)

[Join Over 80000 Happy Readers](#)

Book Descriptions:

We have made it easy for you to find a PDF Ebooks without any digging. And by having access to our ebooks online or by storing it on your computer, you have convenient answers with bosch motion sensor manual . To get started finding bosch motion sensor manual , you are right to find our website which has a comprehensive collection of manuals listed.

Our library is the biggest of these that have literally hundreds of thousands of different products represented.



Book Descriptions:

bosch motion sensor manual

The Bosch Smart Home App immediately warns you in the event of unauthorized entry into your home or if the Motion Detector is tampered with. For a longer service life, you can also insert a second battery into the battery compartment. To operate the Motion Detector you will require the app, a Controller and an internet connection. Motion. Separate the Motion Detector's. The LED will start to flash orange. Prevailing regulations must be observed when installing the product. Controller. The Motion Detector's LED. In both with screws or with adhesive tape. When doing so, you can choose between the pet immunity and sneakby guard functions. Upon If pet immunity is activated, small ani delivery, the product is set to pet mals As a Insert the Motion Detector into the result, there is a possible risk of false mounting bracket from the bottom "Click". Cross the room Batteries 123A in order to test the detection range. The Motion Detector will flash red every time Battery life Up to 5 years it detects movement. Radio frequency 2.4 GHz Max. Smart Motion Detector Reliably detects movements Buy now Multitalent the reliable Motion Detector for your alarm system and your lighting Our Motion Detector keeps an eye on the inside of your home. Use it as part of the alarm system when you leave the house. It detects movements reliably and precisely, instantly sounds an alarm and warns you immediately via app if unwanted guests try to gain access to your living spaces. When you are at home, use your smart Motion Detector for automatic lighting control. Smart motion detection The Motion Detectors intelligent sensors prevent false alarms The Bosch Smart Home Motion Detector recognizes human movement based on body heat and size, thus differentiating between humans and pets. As a result, the alarm is only triggered when it is really necessary. Triggers alarm signal When you leave the house, you can activate your Motion Detector as part of the alarm system. <http://davefarrow.com/userfiles/compal-fl90-repair-manual.xml>

- **bosch motion sensor manual, bosch motion detector manual, bosch motion sensor installation, bosch tritech motion detector manual, bosch ds9370 motion detector manual, bosch 360 motion detector manual, bosch motion sensor manual, bosch motion sensor manual pdf, bosch motion sensor manual instructions, bosch motion sensor manual diagram, bosch motion sensor manual transmission, bosch motion sensor manual 2017, bosch motion sensor manual tool, bosch motion sensor manual software, bosch motion sensor manual free, bosch motion sensor manual.**

If an unusual movement is detected while activated, the smart Motion Detector reacts in two ways It immediately sends you a notification via the app. At the same time, it triggers an alarm signal, for example by the siren of your Smoke Detector. Automatic light control When you are at home, simply switch off the alarm function and use the Motion Detector for automatic lighting control. This is because the sneakby guard prevents this trick. The demolition alarm also provides additional security even if it is torn from the wall by a burglar, the Motion Detector still reacts with an alarm. Smart sensors avoid false alarms The Bosch Smart Home Motion Detector differs from conventional motion detectors by the combination of different intelligent sensors. This enables it to distinguish between different types of movement more reliably. It recognizes people by their body heat and size using infrared and temperature sensors. Moreover, the smart Motion Detector intelligently filters out irrelevant movements caused by reflections or wind in trees and curtains, thus avoiding unnecessary false alarms. Integrated pet immunity for your pet Your pets can still move around the house without any problems despite your smart Motion Detector. Simply activate the integrated pet immunity function. This ensures that the Bosch Smart Home Motion Detector also recognizes

movements by pets up to approx. 25 kg and ignores them. Intelligent activation of your lamps As part of the Bosch Smart Home system, the Motion Detector automatically switches on the light when movement is detected. By the way, this doesn't only work with your Philips Hue lamps simply connect all other lamps via the Smart Plug. The Motion Detector also takes daylight into account. By adjusting the light sensitivity, you decide when the lights turn on. With your Philips Hue lamps you can also dim the light. Manage your smart light control easily via the app. <http://ener-serve.com/FCKimages/compal-fl91-manual.xml>

How it works Alarmed in case of emergency thanks to clever connection of products The whole family is out of the house, but something is happening in your home an uninvited guest has just managed to gain access to the living room through your patio door. However, thanks to your connected alarm system, the intruder can't get any further. Your Motion Detector with alarm trigger registers the unusual movements immediately and reacts with audible and visible deterrence The sirens of the Smoke Detectors sound a loud alarm and your integrated Philips Hue lights flash red. At the same moment you receive a notification via app and the alarm screen on your smartphone is activated. At the same time, you can quickly make an emergency call with just the tap of your finger. Safe Motion Light at night You have to get out of bed at night. No matter whether you have to go to the toilet, need a glass of water from the kitchen or want to check on the children Thanks to your smart Motion Light, you'll never again have to look for the light switch while half asleep. Because the smart Motion Detector recognizes what you're doing and activates the night light in the hallway with your movement, your Philips Hue lamp switches on. Thanks to the preset brightness, however, the light is only dimmed so that you are not unpleasantly dazzled and completely torn out of night mode. So you can safely find your way around the house and back to bed thanks to your Motion Light. Thanks to the activated pet immunity function, the smart Motion Detector can distinguish your kittens walk at home from a break-in. So you'll only be notified in case of an alarm. In addition, your four-legged friend won't activate any lights and won't waste energy if no one but your pet is at home. Consumers are obligated to take batteries to a suitable collection point provided by retailers or municipalities.

You can return used batteries of models that we stock or have stocked in our product line to our shipping warehouse Bosch Thermotechnik GmbH, Spare parts logistics, JustusKilianStrasse 1, D35457 Lollar at no charge. The symbols on the batteries have the following meaning The symbol of the garbage can crossed out by an X means that the battery must not be disposed of in household waste. Manuals Motion Detector Manual Examples of Use Icon forwardright Installation Icon forwardright FAQs about the Smart Motion Detector Icon forwardright Download now Bosch Smart Home App Download the Bosch Smart Home App in your Apple App Store or Google Play Store. System requirements Smartphones from Android 4.4 and iOS 10 Fits this product Security Starter Kit The entry into a safe, smart home with the Bosch Smart Home Alarm System offers protection against fire and burglary and can be flexibly expanded at any time. Security Starter Kit Icon forwardright Smart Plug Integrates conventional electrical appliances as well as lights into your intelligent Bosch Smart Home System. Subscribe now We use cookies to help enhance your online experience. Find out how we use cookies and how you can change your settings. Agree and close Change settings Cookies are small text files that are stored on your computer when you visit our website. You can remove the cookies if you want, but this may prevent you from using parts of our website. To remove cookies, please check your browser menu. If you want to learn more about the cookies we use, please click on hier. With the slider below, you can enable or disable different types of cookies. Note this dialogue does not manage third party cookies, e.g. social media plugins. Drag the slider across to change your cookie settings 1 Necessary 2 Comfort 3 Statistics 4 Targeting 1 Necessary 2 Comfort 3 Statistics 4 Targeting. Motion sensor Specifications. Batteries. Panasonic CR123A Lithium 3 VDC. Duracell DL123A Lithium 3 VDC. Sanyo CR123A Lithium 3 VDC.

<http://www.drupalitalia.org/node/72425>

Battery life for one battery is up to 3 years. Adding a Pet immunity. Up to 100 lbs 45 kg. Operating temperature. Noncondensing humidity Mounting height Use. For indoor use only Battery capacity. Feet Meters. Dimensions. RADION TriTech ZB. Wireless Motion Detector Operation is subject to the following two This equipment has been tested and found to comply with the limits for a Class B digital These limits are designed to provide reasonable This equipment generates, However, there is no Meters. Top Overhead view. Bottom Side view. Key. Dark green PIR detection zones. Yellow PIR detection lookdown zones. Light green Doppler radar range. If this equipment does cause harmful interference to radio or television reception, which can Reorient or relocate the receiving antenna. Increase the separation between the equipment and receiver. Connect the equipment into an outlet on a circuit different from that to which the receiver To reduce potential radio interference to other users, the antenna type and its gain should be so Conformement a la reglementation d'Industrie Canada, le present emetteur radio peut fonctionner avec une antenne d'un type et d'un gain maximal ou inferieur approuve pour l'emetteur Dans le but de reduire les risques de brouillage radioelectrique a l'intention des autres utilisateurs, il faut choisir le type d'antenne et son gain de sorte que la puissance isotrope rayonnee Bosch Security Systems, Inc. Fairport, NY 14450 Robert Bosch Ring 5 Germany Doppler radar motion detector with ZigBee This product contains. Wireless motion detector. Installation instructions. Hardware pack. Battery tray with one battery. You will need a power drill with a phillips Open the detector and mount the base to Opening the detector Use a smart phone and scan the following. QR code for more information regarding Callout Description Bosch Security Systems, Inc. Refer to Figure Figure 4.3 B. Make adjustments until the base is Remove the bubble level from the Secure the base with the remaining Point away from.

<https://iprende.com/images/canon-power-sx20-manual.pdf>

Glass exposed to the outdoors. Direct and indirect sunlight. Objects that change temperature Outside trac. Objects animals might climb on Mounting the base B335 and B338. Sold separately. Refer to Figure 1.1. On solid, vibration free surface. On a at or corner surface. Within recommended mounting height Where an intruder is most likely to Do not install. Near rotating machines or other Near objects that can block the eldofview. Where an intruder would only walk Near direct hot or cold drafts. Pet immunity. Up to 100 lbs 45 kg Congure the features and options located on Figure 4.2 Surface mount left; corner Setting the switches This detector The default is set at HI. This setting Refer to table By default, LED switch is set to on. Switch setting The motion detector has a rotary dial to enable This lookdown Refer to Figure 5.2. Enable the lookdown zone by turning the Disable the lookdown lens to decrease The unit powers up when batteries are Pairing the detector with the controller Complete the Figure 6.1 Battery insertion Performing the walk test This starts Remove the detector body from the base Verify LED activity from the detector. Refer to Section 3 Installation if you The absence Replace the detector on the base. Repeat walk test procedures and range Once started, the detector remains in Be sure to begin walk testing within the Start the walk test from the farthest During the walk test, observe the LED Adjust the radar setting either HI or. LO during the walk test until the red. LED displays. See Section 8.2 Adjust If the controller does not discover If installing To install the batteries Radar sensitivity. Once you complete the walk test, do not After 80 seconds, the detector ashes After ashing for 10 seconds, the In the normal operating mode, an alarm is RF transmissions in high trac areas thereby It is recommended to clean the detector lens Figure 5.2 Lookdown adjustment. Bosch Security Systems, Inc.

<http://cootowlaw.com/images/canon-power-drive-booster-e1-manual.pdf>

Perform the following to replace the Refer to Section 3 Installation to unlock With the other hand, insert the tip of Unlock and open the detector then follow the Region. Agency. Certification. US and. Canada. Control No. 3170792. Conforms to ULC Std. S30603 ZigBee Cert. No. xxxx. Refer to the

following sections for Copyright. This document is the intellectual property of Bosch Security Systems, Inc., and is protected by Bosch Security Systems, Inc. A trouble status reported on the controller Section 4 Installation to unlock the detector This starts a 15 second timer. The LED Trademarks. All hardware and software product names used in this document are likely to be registered by Bosch Security Systems, Inc. Use the serial number located on the product label and refer to the Bosch Security Systems, Inc. A trouble or error status report might occur PDF Version 1.5. Linearized No. Author nie1fp. Create Date 20160509 1414470400. Modify Date 20160509 1424310400. Has XFA No. Creator Tool PScript5.dll Version 5.2.2. Metadata Date 20160509 1424310400. Producer Acrobat Distiller 10.1.16 Windows. Creator nie1fp. Document ID uuid5a9bc3caf4af4651b952be4282d46236. Instance ID uuid45f940fce7ce4d60ac929d4786e97e2c. Page Count 4. Motion sensor F01U314054 02c RFDL ZB ING indd This equipment has been tested and found to comply with the limits for a Class B digital device, pursuant to part 15 of the FCC Rules. These limits are designed to provide reasonable protection against harmful interference in a residential installation. This equipment generates, uses and can radiate radio frequency energy and, if not installed and used in accordance with the instructions, may cause harmful interference to radio communications. However, there is no guarantee that interference will not occur in a particular installation. To reduce potential radio interference to other users, the antenna type and its gain should be so chosen that the equivalent isotropically radiated power e.i.r.p.

is not more than that necessary for successful communication. Conformément à la réglementation d'Industrie Canada, le présent émetteur radio peut fonctionner avec une antenne d'un type et d'un gain maximal ou inférieur approuvé pour l'émetteur par Industrie Canada. Dans le but de réduire les risques de brouillage radioélectrique à l'intention des autres utilisateurs, il faut choisir le type d'antenne et son gain de sorte que la puissance isotrope rayonnée équivalente p.i.r.e. ne dépasse pas l'intensité nécessaire à l'établissement d'une communication satisfaisante. Key Dark green PIR detection zones Yellow PIR detection lookdown zones Light green Doppler radar range Cover age Pattern Speci. Adding a second battery optional can increase battery life up to 6 years total. Corner surface mounting holes 3. Horizontal removable bubble level 4. Vertical position bubble level holder swivel mount only 5. Tamper plate 6 Rotary lock 7 Battery tray location 8. Feature switches 9. Look down adjustment 10. The body slides down. Refer to Figure 4.1. 2. Pull apart to remove it from the base. Figure 4.1 Unlock and open detector Mounting the base 1. Identify mounting location and surface for install. Optional mounting brackets B335 and B338. Sold separately. 2. Identify mounting holes to use based on the mounting surface. This detector has two sensitivity settings; HI and LO. The default is set at HI. This setting provides optimal detection for most installations. Set the sensitivity to LO to decrease the radar range. Refer to table 5.1. 2. Switch 2 LED illumination. The LED illuminates when the device detects PIR and Doppler radar activity. By default, the LED is switched down. Place the switch in the on position switch up if you want the LED illumination during normal operation. Use of a bracket might reduce range and increase dead zone areas. NOTICE! At least one screw must be inserted into the tamper plate for tamper protection. A.

sk-developers.com/wp-content/plugins/formcraft/file-upload/server/content/files/1626c403fb7f90--98-tf-magna-manual.pdf

B. NOTICE! Supported mounting heights range from 7.5 ft to 9 ft 2.3 m to 2.7 m. 2. Use the bubble level to ensure the base is level from side to side. Refer to Figure 4.3 A. 3. Remove the bubble level and place it into the bubble level holder to verify vertical alignment. This is applicable for swivel mount brackets only. Use a smartphone and scan the following QR code for more information regarding installation and mounting considerations. This look down zone should be disabled in locations with pets. Verify your home control system or security control panel is powered up and operational before beginning the pairing process. NOTICE! To preserve battery life, LED

indications are visible only after 3 minutes have passed since the previous alarm reset when the LED switch is set to on. NOTICE! If the controller does not discover the motion detector within three minutes, the motion detector exits pairing mode. Slide the detector body onto the mounted base. Pairing the detector with the controller 1. The red LED lights for two seconds, then the detector enters pairing mode. 2. The red LED flashes three times every. Refer to Section 3 Installation if you don't see any LED activity. The absence of LED activity might indicate an improper mounting height and will have to be adjusted. Refer to Figure 5.1 for switch settings. 3. Replace the detector on the base. Repeat walk test procedures and range adjustments until the PIR and radar detection range are the same indicated by red LED. The battery tray on this device has two compartments. The device requires only one battery to operate included and is already installed. You can add a second battery not included to extend battery life. If installing for the. To install the batteries 1. Slide the battery tray into the detector body using two. Be certain to slide the tray in until the top of the tray is.

The LED stays lit for 2 seconds immediately after the battery "clicks" into place. Performing the walk test 1. Remove the detector body from the base then slide it back on. This starts a 15 second timer. The LED cycles red, yellow, and green during this time. If no motion is detected for 90 seconds, the unit exits walk test mode. This is pre-ferred. 5. Adjust the radar setting either HI or LO during the walk test until the red LED displays. See Section 8.2 Adjust the radar. 1. Once you complete the walk test, do not disturb the detector's coverage pattern for 90 seconds. 2. After 80 seconds, the detector. This three minute lockout time reduces unnecessary RF transmissions in high tra. NOTICE! Product must be walk tested at least once each year. Trademarks All hardware and software product names used in this document are likely to be registered trademarks and must be treated accordingly. Bosch Security Systems, Inc. To troubleshoot the condition, begin by replacing the batteries. Replacing the detector 1. Slide the detector back onto the base. This starts a 15 second timer. The LED cycles red, green, and yellow during this time. Refer to Section 3 Installation to unlock the detector. 2. Hold the detector body with one hand. With the other hand, insert the tip of your. Refer to Figure 9.1. 4. Insert one or two batteries, observing proper polarity. Refer to the diagram on the battery tray for proper positioning. 5. Slide the battery tray into the detector body using two. Be certain to slide the tray in until the top of the tray is. Battery life for one battery is good up to 3 years. Using a second battery optional can increase battery life up to 6 years total. NOTICE! Replace all old batteries with new ones. This is indicated by a single red LED. Check your control panel status for more information. NOTICE! Bosch is committed to responsible environmental stewardship.

Please dispose of batteries in accordance with local laws and regulations in your area. Contact your local waste disposal authorities or consult www.ecyclingcentral.com to find an electronics recycling center near you. This equipment has been tested and found to comply with the limits for a Class B digital device, pursuant to part 15 of the FCC Rules. Contact your local waste disposal authorities or consult www.ecyclingcentral.com to find an electronics recycling center near you. Too bad their product didn't work. And yes I used to code as is without any change. Took me a while to figure out what I was looking at but I think we're golden now. I didn't even have to change the DTH Dang it!. I'm happy we all get to smartify our homes I tried installing one of my Bosch Motion Sensors and ST saw a new thing but that is as far as it goes. This convo got a little disjointed but ended up in a win. I got onto the ST developer app and I see everything you guys are talking about but don't really know what information to put where in there. Little help please. Thanks Matt Also made some adjustments to the battery measurement 36 volts instead. The update also fixed the device being wiped in the mobile app android. Can someone help I have 2 Visonic door sensors as well. Imported your DTH for that as well. Any idea how I can reset the Visonic sensor. Follow the first set of instructions above to then connect the sensor with SmartThings. So if it have just detected motion it will not detect any motion for 3 minutes. Im not aware that this time can be

changed. Guess it is some sort of energy saving feature. However, right after the walking test, ST shows a device unavailable error. I tried removing and repairing it, and I see the exact same issue. So pretty much the temp reporting keeps the Bosch PIR "alive".

After association and after a walk test mode when I put back the back lid after associating with ST, the sensor shows up as "Active" without reverting to Inactive no motion around sensor. After about 10 minutes, the sensor shows up as "Unavailable" with a "This device is unavailable at the moment" message same as before. When it becomes unavailable, there is nothing in the live log. Hopefully this can be fixed with the dth. As an example, say I have the motion sensor in the closet to turn on the light with motion. If I walk in and stand still for more than a couple seconds it will go straight to inactive then as normal wait a few minutes before recognizing anything again.

<http://www.drupalitalia.org/node/72426>